



The full imaging spectrum

Superb images today.
Powerful research tomorrow.

Digital excellence in biomolecular imaging

GE Healthcare Life Sciences offers a broad range of high-quality products covering 1-D and 2-D electrophoresis, Western blotting, and 2-D Difference Gel Electrophoresis (2-D DIGE). Common to all of these analytical workflows is image capture. Our portfolio of versatile and upgradeable imagers covers the entire range of protein and nucleic acid detection methods—from densitometry, through phosphorimaging to fluorescence and chemiluminescence—so that you can select the most appropriate analysis platform for your applications.

Start-to-finish solutions made to work together

To help you obtain quantitative results of high quality in protein and nucleic acid analysis, we provide products that work together in start-to-finish workflows, from sample preparation to analysis. We offer full support to provide our customers with integrated, validated bioanalytical processes in image acquisition, and data analysis.

Imagers for a spectrum of applications

Whatever your requirements, GE Healthcare has the imager, reagents, and methods to enable you to capture excellent images and achieve the quantitative results that your applications demand.



Chemiluminescence

Chemiluminescence is the method of choice for sensitive, nonradioactive Western blotting. Amersham™ imagers provide quantitative imaging of chemiluminescence, and gel documentation. These CCD camera-based imagers provide publication grade data, digital image archiving, and better quantitation than film, without sacrificing sensitivity.

Fluorescence

Fluorescence enables great sensitivity, as well as the detection of multiple samples in one gel or blot for accurate comparison. Amersham imagers offer options to image fluorescence. For top performance, the versatility and uncompromising imaging quality of Typhoon™ variable mode scanners, supporting triplex fluorescence, enables you to take your research to the next level.

Densitometry

Amersham Imager 600 QC is a dedicated configuration for densitometry applications in a QC environment.

The system contributes to a safe manufacturing environment because it is equipped with highly sensitive optics that can detect minute amounts of impurities accurately.

Amersham Imager 600 QC is available with IQ/OQ and validation support.

Phosphorimaging

Storage phosphor revolutionized radioactive detection for biological research by improving sensitivity, quantitation, and ease-of-use. Typhoon laser scanner systems use storage phosphor to deliver high-resolution quantitation of ^3H , ^{11}C , ^{14}C , ^{125}I , ^{18}F , ^{32}P , ^{33}P , ^{35}S , $^{99\text{m}}\text{Tc}$, and other sources of ionizing radiation.



Protein detection workflows

Workflow

Electrophoresis

Chemiluminescence only

Amersham™ ECL™ Gel



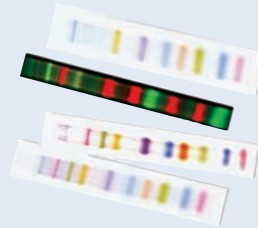
Versatile quantitative protein detection

Amersham ECL Gel



Transfer, markers, 2nd dimension

Rainbow markers



TC 70/77 PWR Semi-dry Transfer Unit



Detection

Amersham ECL
Amersham ECL Select™



Amersham ECL Select
Amersham ECL Prime
Amersham ECL Plex™



Imaging

Amersham Imager 600
ImageQuant LAS 500



Amersham Imager 600 UV
Amersham Imager 600 RGB



Extended analysis

ImageQuant™ TL



ImageQuant TL



QC Workflow

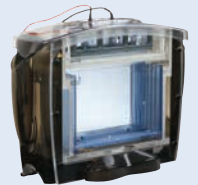
Phosphorimaging

2-D electrophoresis and 2-D DIGE

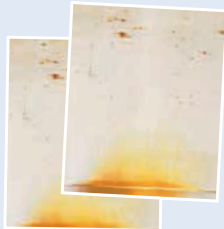
Ettan™ IPGphor™ 3 IEF System



Ettan DALTSix
Large Electrophoresis System



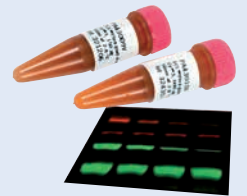
Silver Stain Coomassie



IP Plates



CyDye™ DIGE Dyes
Amersham ECL Plex



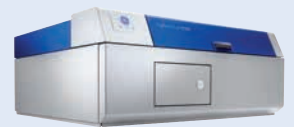
Amersham Imager 600 QC



Typhoon FLA 7000IP
Typhoon FLA 9500



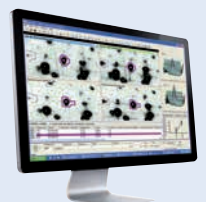
Typhoon FLA 9500



ImageQuant TL SecurITy



ImageMaster™ 2D Platinum
DeCyder™ 2D





Typhoon laser scanners

At the cutting edge of quantitative imaging

The ability to distinguish subtle differences in expression among low amounts of biomolecules in complex mixtures adds power to many areas of biological research. Highly versatile Typhoon laser scanners enable you to generate data of the highest quality through linearity of signal response, quantitative accuracy, and extremely low limits of detection.

Typhoon scanners utilize the strengths of laser-excited fluorescence and storage phosphor technology to achieve optimal signal detection for your samples. The imaging of radiolabels by Typhoon scanners can be up to five hundred times faster than film.

Harnessing these technologies, Typhoon scanners provide a versatile, multiuser platform for filmless autoradiography, fluorescent Amersham ECL Plex, CyDye fluors, and 2-D Difference Gel Electrophoresis (2-D DIGE).

- Uncompromising sensitivity and imaging quality
- Versatility for many users and applications
- Effortless switching between imaging modes







Uncompromising scanning power

Typhoon FLA 9500 supports phosphorimaging, 2-D DIGE imaging, red/green/blue (RGB) and near IR fluorescence as well as sensitive and accurate quantitation of proteins using the multifluorescent Amersham ECL Plex Western blotting system.

High resolution and quantitation

- Precisely quantitate signals across five orders of magnitude in gels, blots, tissue sections, and arrays up to 40 × 46 cm
- Measure minute changes in expression by detecting signals otherwise obscured by background noise, down to 10 µm pixel resolution

Versatility

- Image multifluorescent, colorimetric/gel digitization, or radiolabeled samples for quantitative detection in a wide range of applications, from DNA analysis to Western blotting

Flexibility

- Adapt the system for new applications, using optional stages, detectors, filters, and lasers
- Enable optional near IR fluorescence imaging

High sample throughput

- Image and compare up to 16 blots or gels, or 2 large 2-D gels simultaneously, reducing workload and waiting time

Speed

- Select the correct settings right from the start using the Prescan function

2-D DIGE applications

2-D DIGE is a technique for the accurate quantitation of differences in protein expression. Typhoon FLA 9500 is optimized for 2-D DIGE applications with DeCyder 2D Differential Analysis Software.

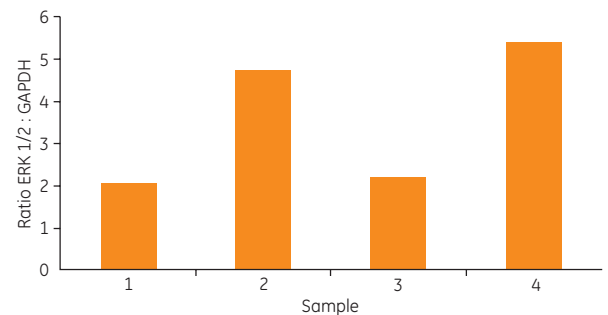
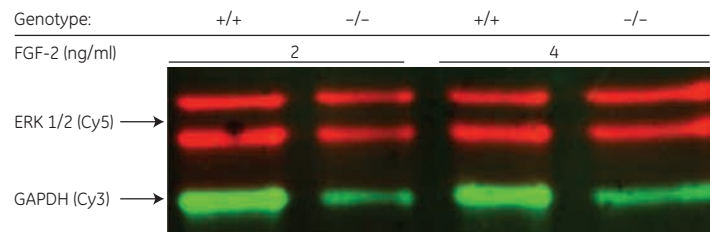
By generating overlaid multichannel images of up to three samples in each gel, Typhoon FLA 9500 exploits the

multiplexing potential of CyDye DIGE fluors to eliminate experimental gel to gel variation and reveal true differences in protein abundance between/among samples.

Comparative protein quantitation

Amersham ECL Plex Western blotting system, in combination with Typhoon scanners, enables sensitive, precise, multiplexed detection of both high- and low-abundant proteins with high linearity across a dynamic range of four orders of magnitude.

With CyDye conjugated antibodies, it is possible to simultaneously detect more than one target biomolecule on the same blot. The protein under study can be reliably quantitated relative to a housekeeping protein, reducing the risk of drawing false conclusions from experimental variation.

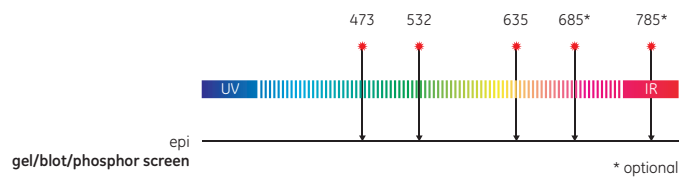
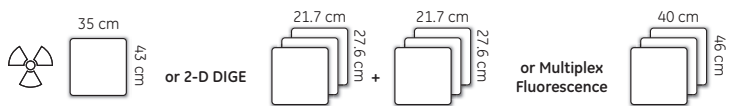


Normalization exposes changes in protein expression

Cells wild-type for ERK 1/2 (+/+) and enzyme knockouts (-/-) were treated with FGF-2. ERK 1/2 and a housekeeping protein, GAPDH, were targeted using Amersham ECL Plex plus specific primary antibodies and secondary antibodies labeled with Cy5 (red) or Cy3 (green). The ratio of ERK1/2: GAPDH intensity revealed differences in the expression of ERK 1/2, independent of sample load.



Typhoon FLA 9500





Fast and flexible scanning

If a typical week in your lab involves the analysis of one blot after another by your colleagues on a shared instrument, each with their own requirements, the last thing you need is to lose time preparing the imager for your experiment. Whatever your application, Typhoon FLA 7000 scanner shortens your start-up time.

Multi-user power

- Shorten start-up time with predefined methods, multiple lasers and easily changeable filters

Versatility

- Choose from four preinstalled lasers to quickly adapt the system to the detection of signals emitted by a wide variety of fluorescent labels
- Select other detection methods, including phosphorimaging, several single R/G/B fluorescence detection options, and duplex ECL Plex Western blotting
- Image chemifluorescent, colorimetric/gel digitization, or radiolabeled samples

High resolution and quantitation

- Generate 16-bit images at up to 25 μm pixel resolution
- Precisely quantitate over a span of five orders of magnitude in gels, blots, and tissue sections

High speed

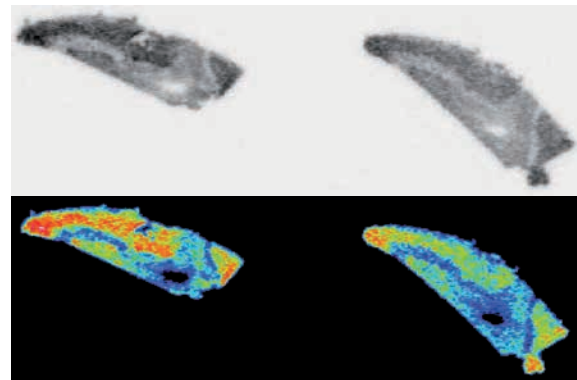
- Scan gels of up to 24 \times 25 cm in less than two minutes at 100 μm resolution with no loss of sensitivity

High sample throughput

- Image and compare up to 8 large blots or gels in minutes

Phosphorimaging

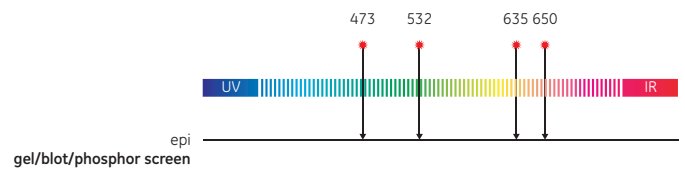
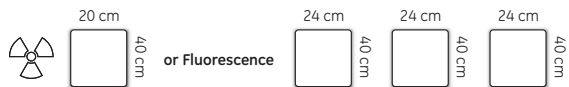
- Typhoon scanners detect a broad range of isotopes, including ^3H , ^{11}C , ^{14}C , ^{125}I , ^{18}F , ^{32}P , ^{33}P , ^{35}S , $^{99\text{m}}\text{Tc}$, and other sources of ionizing radiation.
- Typhoon scanners quantitate strong and weak signals over a linear dynamic range of five orders of magnitude
- Typhoon scanners utilize most storage phosphor screens
- Reusable storage phosphor screens and image eraser are available from GE Healthcare, saving time and cost compared to using film



PET tracer [^{11}C]PIB (a molecule that binds to amyloid plaques) was detected in brain cryosections from patients suffering from Alzheimer's Disease, scanned on Typhoon FLA 7000. Greyscale and pseudocolor image display modes were used to investigate tracer concentration variations. Images courtesy of Håkan Hall and Marie Svedberg, Uppsala Applied Science Lab, GE Healthcare.



Typhoon FLA 7000





Amersham CCD imagers

Powerful imagers for multiple applications

Amersham imagers support a range of imaging applications including chemiluminescence, fluorescence, colorimetry, and gel documentation. These charge-coupled device (CCD)-based systems provide an affordable option for protein and DNA detection and reduce the need for a dedicated dark room and the associated environmental costs. Benefits of Amersham systems include publication grade data, image and data archiving, and better quantitation than film without sacrificing sensitivity. Amersham imagers are fully compatible with powerful ImageQuant TL software.

Amersham imager 600 series is a new range of sensitive and robust imagers for the capture and analysis of high resolution digital images of protein and DNA samples in gels and membranes. These multipurpose imagers bring high performance imaging to chemiluminescence, fluorescence, and colorimetric applications. The design of Amersham Imager 600 combines our Western Blotting application expertise with optimized CCD technology and exceptional optics from Fujifilm™. The system has an integrated analysis software and intuitive workflow, which you can operate from an iPad™ or alternative touch screen device, to generate and analyze data quickly and easily.

ImageQuant LAS 500 places sensitive chemiluminescence detection at your finger tips, through a simple yet powerful touchscreen. The system also includes epi-illumination to enable fluorescence and colorimetric detection. Data is saved on a USB memory device or through a network connection, ready for evaluation on an external computer.

- Highly sensitive detection across a wide dynamic range for precise quantitation
- Publication-ready gel documentation
- Chemiluminescent, fluorescent, and colorimetric applications on a single platform

Great images are a touch away

Plug-in start

Getting started couldn't be easier – to install the system, simply connect to the power source and switch on. The CCD is cooled and ready to deliver sensitive detection in just 5 minutes.

Touchscreen

A very simple touchscreen interface controls all imaging tasks. And naturally, it can be operated wearing lab gloves.

Simple loading

Loading trays are provided to image blots and gels. Simply place the sample on the relevant tray and insert into the imager. For fluorescence detection, insert the filter provided.

Intelligent autoexposure

Choose the imaging method, and the system takes care of the rest. There is no need to focus, adjust or calibrate anything.

Sensitivity

- The optimized light path and a sensitive 8.3 megapixel cooled CCD are specifically designed for chemiluminescence
- You can obtain reliable quantitation of as little as 5 picograms of protein, with a dynamic range of more than 4 orders of magnitude

Convenient data transfer

- The true 16-bit image data can be accessed via built-in Ethernet, or directly transferred to a USB memory device
- The data are fully compatible with ImageQuant TL analysis software

High quality data from chemiluminescent blots in minutes

ImageQuant LAS 500 offers convenient analysis of blots prepared using any Amersham ECL Western blotting detection reagent. ImageQuant LAS 500 can image gels and blots up to 10.5 × 10.5 cm.





Excellent sensitivity

Amersham imager 600 employs an advanced Fujifilm™ CCD camera and a bright, wide-aperture FUJINON™ F0.85 lens to provide exceptional sensitivity for Amersham ECL chemiluminescence, as well as a wide range of fluorescent labels for protein and nucleic acid detection and quantitation.

Responses are highly linear and enable precise quantitation across four orders of magnitude.

Intuitive operation:

- You can operate the instrument from a tablet computer with an intuitive design and easy-to-use image analysis software. You do not need prior imager experience or training to obtain high-quality results. Use the automatic capture mode for convenient exposure.

Excellent performance:

- The system uses a superhoneycomb CCD and a large aperture f/0.85 FUJINON™ lens, which consistently delivers high-resolution images, high sensitivity, broad dynamic range (DR), and minimal cross-talk

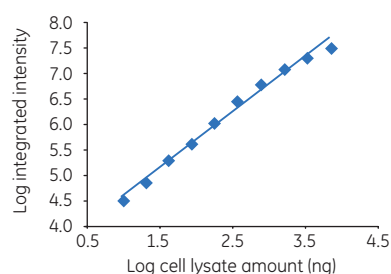
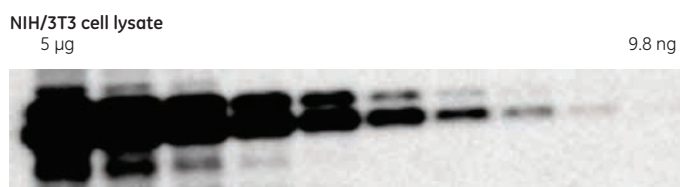
Robustness:

- Combining minimal maintenance with our proven expertise in Western blotting and electrophoresis makes the imager well suited for multiuser laboratories. Amersham Imager 600 is an upgradable series of imagers that can grow with your imaging needs.

Freedom of choice in quantitative imaging

Quantitative Western blotting

The high sensitivity of the system is designed to quantitate the chemiluminescent signals from Amersham Western ECL and ECL Prime blotting reagents. The dynamic range enables you to compare high and low signals precisely.



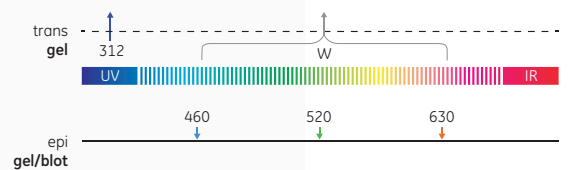
Analysis of transferrin by chemiluminescence using ECL Prime Western blotting system gives a LOD of 2.4 pg and a dynamic range of 2.4 orders of magnitude.

Fully upgradable

Amersham Imager 600 series is fully upgradable between four different configurations. Each configuration can be used for chemiluminescent detection and nonquantitative gel documentation. The different configurations are equipped with light sources and filters for UV and white light trans-illumination, and red, green and blue epi-illumination for multiple fluorescence detection. Optical density (OD) measurements are calibrated for quantitation of colorimetric staining applications.



Amersham Imager 600 RGB





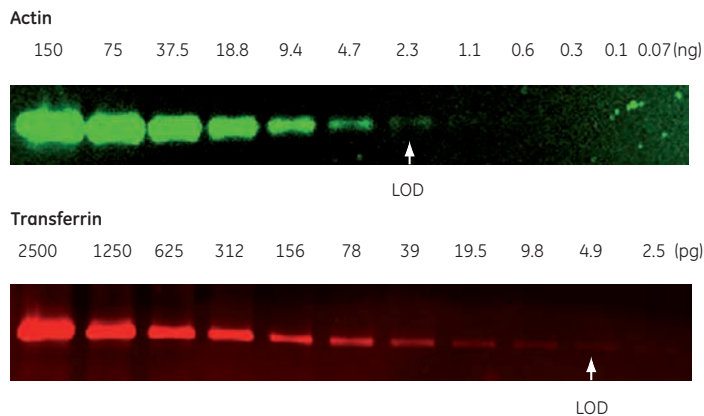
Multiplexed images on a single membrane

Amersham Imager 600 RGB is designed for multichannel imaging and is especially suited to the quantitation of signals on blots processed using Amersham ECL Plex Western blotting system with CyTM3 and Cy5. Independent visualization and quantitation of proteins completely removes the need for stripping and re-probing the membrane.

A wide range of visible fluorescent dyes can be imaged via RGB epi-illumination combined with appropriate filter sets.

UV fluorescence

A UV transilluminator is available for fluorescence detection of reagents such as EtBr and epifluorescence for fluorescent post stains.



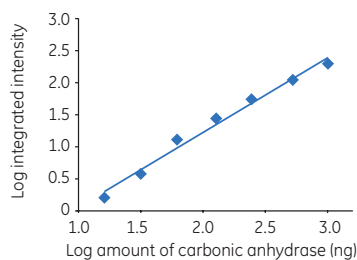
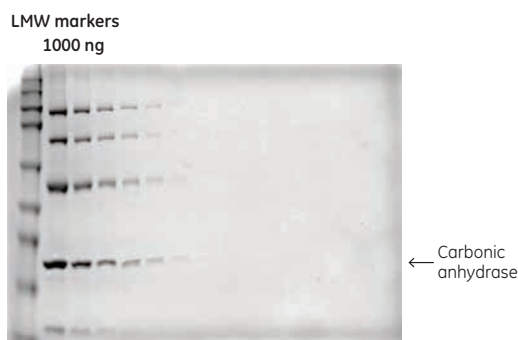
Dilution series of human actin and transferrin analyzed by blotting. Actin was visualized with mouse anti-human actin then Amersham ECL Plex anti-mouse Cy3. Transferrin was visualized with rabbit anti-human transferrin, then Amersham ECL Plex anti-rabbit Cy5.

Quantitative OD measuring

Amersham Imager 600 QC is a dedicated configuration for densitometry applications in a QC environment. The system contributes to a reliable control of products because it is equipped with highly sensitive optics that can detect trace amounts of impurities accurately. Amersham Imager 600 QC is available with IQ/OQ and validation support.

Validation support

GE Healthcare can provide you with a comprehensive suite of life cycle validation services for laboratory systems used in good practice environments, such as GLP, GMP or GCP. Our validation experts develop and approve the documentation. Installation Qualification and Operation Qualification (IQ/OQ) are performed on-site by trained service engineers. Our engineers can also help you with periodic re-qualification (RQ), and evaluate, verify and document system changes and software upgrades with Change Control Protocols (CCP) software.



Dilution series of a DNA marker separated by PAGE and visualized with ethidium bromide, demonstrating the linearity of signal response.





ImageQuant LAS 500

High quality chemiluminescence data with compact convenience

ImageQuant LAS 500 ensures that you can obtain high quality data from your Western blot with a minimum of time and effort. The CCD imager delivers extraordinary performance for its price, making it the rational choice for individual researchers and laboratories looking for a fast and simple alternative to film. ImageQuant LAS 500 is robust, and new users require little or no instruction, which makes it particularly suitable for routine work, or the generation of fast, unbiased (operator independent) results. This imager provides everyday convenience, even for the occasional user.

ImageQuant LAS 500 can be used to image chemiluminescent Western blots, blots and gels visualized using a total protein stain, UV fluorescent DNA gels stained with SYBR Green or ethidium bromide, and gels visualized with Coomassie Blue or silver stain. And it can automatically overlay an image of the molecular weight marker associated with your Western blot.

- Intuitive touchscreen user interface
- Compact, PC-independent design for blots and gels up to 10.5 × 10.5 cm
- Chemiluminescence detection, and epi-illumination for colorimetric and UV-fluorescence detection as standard.

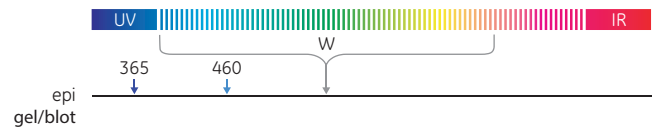




Image analysis

From images to real results

Our software products address a wide range of image analysis needs—from basic documentation and purity screening to the querying of entire gene expression or 2-D gel datasets. Combined with our imaging instruments, our software offers total solutions to many challenging applications.

1-D – Amersham Imager 600

- Integrated image capture and analysis software
- Workflow guided analysis
- Support multi-plex labelled experiments

1-D, array, colony counting – ImageQuant TL

- Easy and powerful, all-purpose analysis software
- One-click analysis
- Four functional areas for 1-D, dot blots, colony counting/2-D spot measurement, and user-defined gel analysis

1-D analysis for the professional lab – ImageQuant TL SecurITy

- Password protection and electronic sign-off
- Version control of every gel and blot image
- Audit reports that track image analysis and approval steps

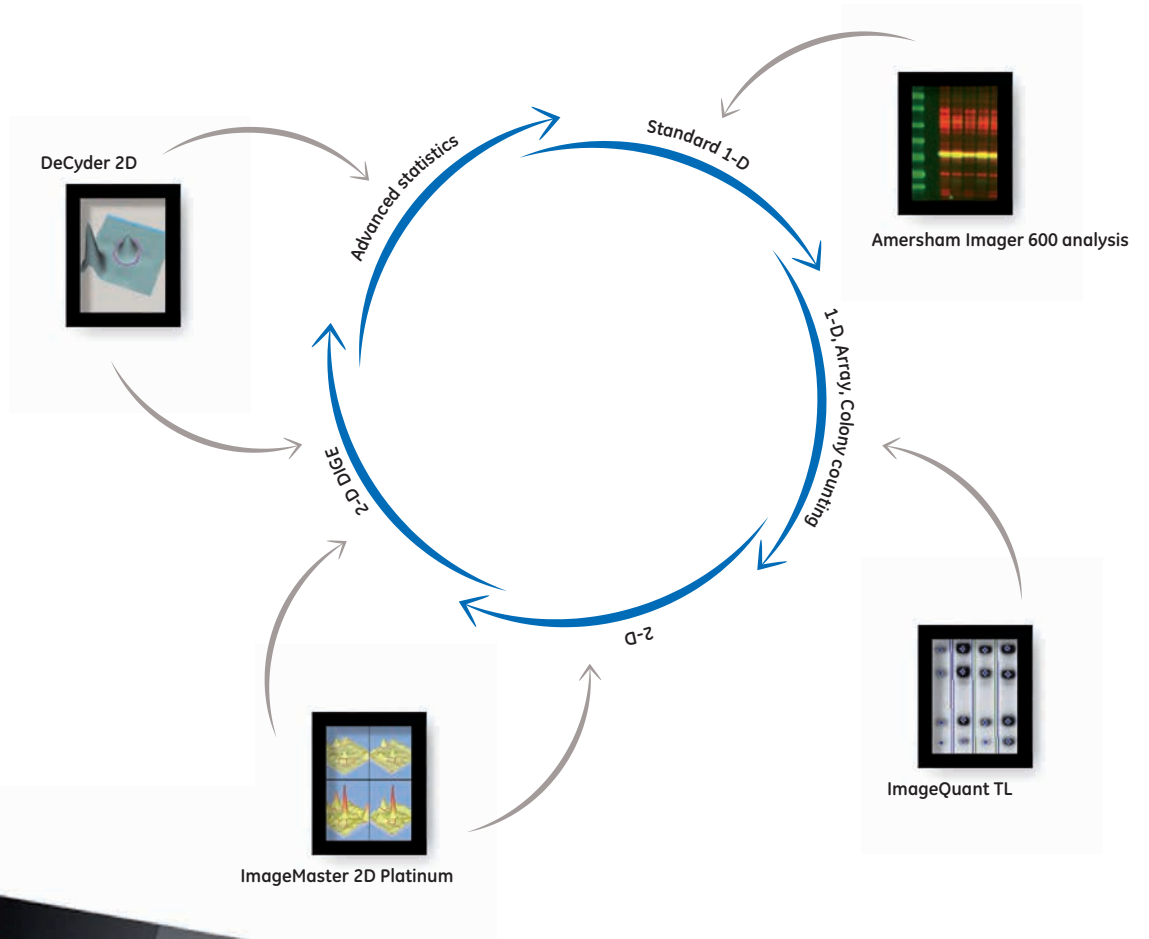
2-D – ImageMaster 2D Platinum

- Analysis of 2-D DIGE and 2-D electrophoresis gels
- A flexible and intuitive package that gives you control over your analysis

2-D DIGE – DeCyder 2D

- Spots real differences with statistical confidence
- Time-saving automation saves days of work
- Calculates, interprets, and reports using multivariate analysis to uncover patterns in expression data





1-D gel analysis

ImageQuant TL software—automated 1-D and 2-D analysis

ImageQuant TL is an automated and easy-to-use general purpose gel, blot, and array image analysis software.

- Intuitive user interface with step-by-step interactive guides
- High levels of automation as well as full manual control for detection and quantitation
- Comprehensive editing functions at each stage of the analysis
- Automatic report builder with full user control for laboratory notebooks and publication
- Analysis of multiplexed images

The software offers four separate functional areas that include 1-D electrophoresis gels; dot blots, microplates, and basic arrays; colony counting, and measurement of 2-D spots; and a toolbox to analyze gels with user-defined objects.



Single-click identification of gel lanes and bands in ImageQuant TL

ImageQuant TL SecurITy - imaging in the professional lab

ImageQuant TL SecurITy provides a complete data security environment for ImageQuant TL. You gain complete control and traceability of 1-D gel and blot data.

- User name and password security, which limits access to image files for authorized individuals only
- Approval of experiments (electronic signatures)
- Version control audit trail, which ensures full traceability of images
- Experiment audit reports, which allow easier tracking of image analysis procedures



Your specific GMP requirements for image analysis and reporting can be met with ImageQuant TL SecurITy

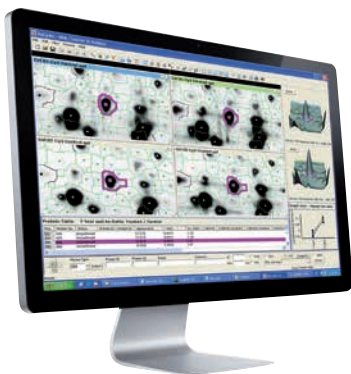
2-D gel analysis

DeCyder 2-D Differential Analysis software

2D DIGE system eliminates gel-to-gel variation in 2-D electrophoresis to reveal real biological variation. The system is based on the specific properties of CyDye DIGE Fluor dyes, which enable multiplexing of protein samples on the same 2-D gel, and the inclusion of an internal standard.

DeCyder 2-D software automatically locates and analyzes multiple samples in a gel and then enables comparative analysis of multiple gels, producing accurate measurements of differential changes in protein abundance.

- Complete 2-D DIGE analysis including patented co-detection algorithms
- Internal standards derive statistical data within and between gels to eliminate variation
- Possibility to use exogenous standards (externally spiked proteins) for analysis of samples with large heterogeneity
- Statistically valid detection of as little as 10% differences in protein levels
- Reduction of time for hands-on analysis to minutes
- Increased matching accuracy and easier data evaluation by using Warping



DeCyder 2-D facilitates comparison of samples by linking the user interface data inspection quadrants

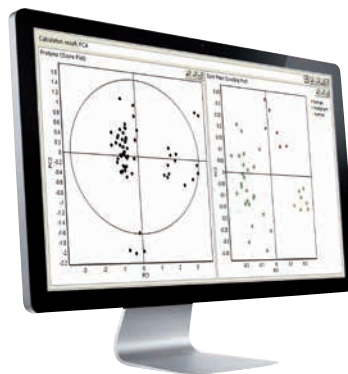
DeCyder Extended Data Analysis software

DeCyder Extended Data Analysis software provides powerful, high-performance statistical analysis based on the 2-D DIGE methodology. DeCyder EDA quickly and easily analyzes 2-D DIGE gels and easily creates pick lists of specific proteins.

DeCyder EDA is used for multivariate analysis of protein expression data and can handle up to 1000 spot maps.

Statistical analyses include:

- **Principal component analysis**
Produces an overview to find outliers in the data.
- **Pattern analysis**
Finds patterns in expression data (e.g., proteins and spot maps with similar expression profiles).
- **Discriminant analysis**
Finds proteins that discriminate between different samples (biological markers), creates classifiers and assigns samples to known classes depending on expression profiles (e.g., tumor typing).
- **Interpretation**
Places proteins into biological context. It can be used, for example, to determine the pathways and processes a protein is involved in, and the function of the protein.



PCA result in DeCyder EDA

ImageMaster 2D Platinum software— flexible 2-D analysis

ImageMaster 2D Platinum is built for comprehensive visualization, exploration, and analysis of 2-D image data. The software solution, aimed at identifying protein markers of interest through differential expression analysis, can be applied to a wide range of 2-D gel and blot experiments, including 2-D DIGE.

- Analysis of both single stain and multiplexed images
- Easy import and image viewer functionality
- Effective spot detection and matching solutions
- Versatile analytical methods to identify differentially expressed proteins
- User-friendly, flexible and customizable interface
- Adaptable visualization tools and export options
- Extensive annotation capabilities to link gel objects to external search engines or databases
- Seamless integration in your laboratory workflow

ImageMaster 2D Platinum is developed by the Swiss Institute of Bioinformatics in collaboration with GE Healthcare, and is powered by the widely-used Melanie gel analysis software.



The customizable ImageMaster 2D Platinum interface allows a clear overview of all critical information.

Configurations

	ImageQuant LAS 500	Amersham Imager 600	Amersham Imager 600 UV	Amersham Imager 600 RGB	Amersham Imager 600 QC	Typhoon FLA 7000 IP	Typhoon FLA 7000	Typhoon FLA 9500
Chemiluminescence	•	•	•	•	•			
UV fluorescence	•	(•)	•	•	•			
RGB fluorescence		(•)	(•)	•	(•)	(•)	•	•
NIR fluorescence								(•)
Densitometry		(•)	(•)	•	•			
Phosphorimaging						•	•	•
Visible stains	•	•	•	•	•	•	•	•
Field of view (cm)	10.5 × 10.5	220 × 160	220 × 160	220 × 160	220 × 160	20 × 40 Ph 24 × 40 FI	20 × 40 Ph 24 × 40 FI	35 × 43 Ph 40 × 40 FI

(•) Optional

Ph Phosphorimaging

FI Fluorescence detection

Typhoon FLA 9500



Typhoon FLA 9500 – the highly versatile laser scanner with cutting edge performance covering the whole range of imaging applications

Typhoon FLA 7000/FLA 7000 IP



Typhoon FLA 7000/Typhoon FLA 7000 IP – the robust and fast laser scanner for standard fluorescence applications and phosphorimaging

Amersham Imager 600 series



Amersham Imager 600 – a high performance CCD imager series that combining ease of use with superb optics from Fujifilm™ for uncompromised imaging quality

Amersham Imager 600 QC



Amersham Imager 600 QC – an accurate and reliable CCD imager for gels & blots including calibrated densitometry measurements suitable for regulated environments in biopharmaceutical manufacturing

ImageQuant LAS 500



ImageQuant LAS 500 - the CCD imager that provides high quality chemiluminescence data with compact convenience

IP Plates



IP Plates – storage phosphor plates for precise and reliable image quality

Hyperfilm



Hyperfilm ECL - the film with clarity that gives superior contrast and band visibility in the detection of chemiluminescent signals.

Hyperfilm MP - a versatile film for sensitive autoradiography

Ordering information

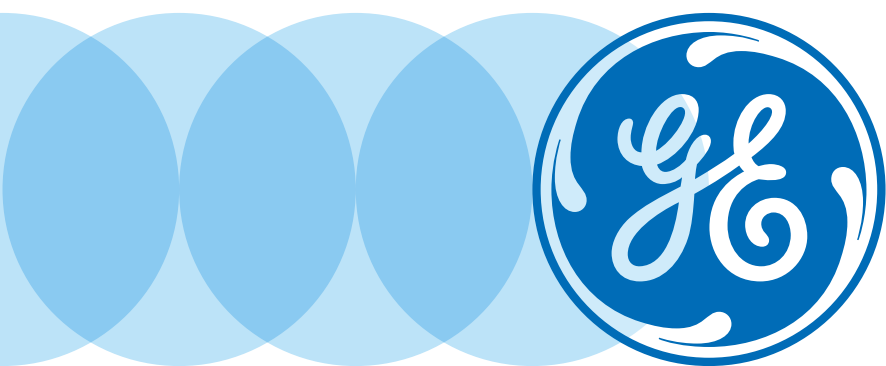
Products	Quantity	Code no.	Products	Quantity	Code no.
Laser scanners			ImageMaster 2D Platinum		
Typhoon Variable Mode Imagers					
Typhoon FLA 9500	1	29-0040-80	ImageMaster 2D Platinum 7.0 DIGE, 1 license	1	28-9380-55
Typhoon FLA 7000	1	28-9558-09	ImageMaster 2D Platinum 7.0 upgrade to DIGE, 1 license	1	28-9398-10
Typhoon FLA 7000 IP	1	28-9836-18	ImageMaster 2D Platinum 7.0, 1 license	1	28-9380-91
Amersham CCD Imager			ImageMaster 2D Platinum 7.0 software package	1	28-9408-30
ImageQuant LAS 500	1	28-9558-13	DeCyder 2D		
Amersham Imager 600	1	29-0834-61	DeCyder 2D 7.2 concurrent network license		28-9854-18
Amersham Imager 600 UV	1	29-0834-63	DeCyder 2D 7.2 Preinstalled computer		28-9856-57
Amersham Imager 600 RGB	1	29-0834-67	DeCyder 2D 7.2 SPN 1 concurrent network license		28-9854-11
Amersham Imager 600 QC	1	29-0834-64	DeCyder 2D 7.2 SPN 1 concurrent network license Upgrade		28-9854-17
Analysis software			DeCyder 2D 7.2 additional 1-user license		29-0172-16
ImageQuant TL			DeCyder 2D 7.2 SPN additional 1-user license		29-0172-14
IQTL 8.1 and IQTLSecuriTy 8.1 Software Package	1	29-0006-05	DeCyder 2D 7.2 Software package		28-9964-35
IQTL 8.1, node locked license	1	29-0007-37	DeCyder 2D 7.2 User manuals		28-9955-46
IQTL Security 8.1, node locked license	1	29-0007-40	DeCyder 2D Oracle 11g 5 user license		28-9957-36
IQTL 8.1, 5 × 1 node locked license	1	29-0008-10	DeCyder 2D 7.2 Upgrade from 7.0		28-9854-19
IQTL 8.1, 5-user floating license	1	29-0006-91	DeCyder 2D 7.2 SPN Upgrade from 7.1 SPN		28-9854-20
Imaging plates			DeCyder 2D 7.2 Upgrade from 6.5		29-0172-18
BAS-IP MS 2040 E Phosphorimaging plate, 20 × 40 cm, multipurpose	1	28-9564-74	DeCyder 2D 7.2 Upgrade from 6.5+EDA		29-0172-17
BAS-IP MS 2025 E Phosphorimaging plate, 20 × 25 cm, multipurpose	1	28-9564-75	DeCyder 2D 7.2 SPN Time limited Demo License		28-9854-16
BAS-IP MS 3543 E Phosphorimaging plate, 35 × 43 cm, multipurpose	1	28-9564-76	<hr/>		
BAS-IP SR 2040 E Phosphorimaging plate, 20 × 40 cm, high resolution	1	28-9564-77			
BAS-IP SR 2025 E Phosphorimaging plate, 20 × 25 cm, high resolution	1	28-9564-78			
BAS-IP TR 2040 E Phosphorimaging plate, 20 × 40 cm, for tritium detection	1	28-9564-81			
BAS-IP TR 2025 E Phosphorimaging plate, 20 × 25 cm, for tritium detection	1	28-9564-82			
BAS-IP SR 12.7X12.7 E Phosphorimaging plate, 12.7 × 12.7 cm, high resolution	1	28-9564-79			
BAS-IP SR 0813 E Phosphorimaging plate, 8 × 13 cm, high resolution	1	28-9564-80			
BAS-IP ND 2040 E Phosphorimaging plate, 20 × 40 cm, for neutron detection	1	29-0171-33			
BAS-IP ND 2025 E Phosphorimaging plate, 20 × 25 cm, for neutron detection	1	29-0171-39			
Exposure Cassette Unmounted Screen, 20 × 25 cm	1	63-0035-44			
Exposure Cassette Unmounted Screen, 35 × 43 cm	1	63-0035-45			

Products	Quantity	Code no.	Products	Quantity	Code no.
Western blotting detection reagents			Amersham markers		
Amersham ECL reagents			Amersham ECL DualVue Western Blotting Markers (25 loadings)		
Amersham ECL Western Blotting Detection Reagents	For 1000 cm ² membrane	RPN2109	Amersham ECL DualVue Western Blotting Markers (25 loadings)	1 pack	RPN810
Amersham ECL Western Blotting Detection Reagents	For 2000 cm ² membrane	RPN2209	ECL Plex Fluorescent Rainbow Markers	120 µl	RPN850E
Amersham ECL Western Blotting Detection Reagents	For 4000 cm ² membrane	RPN2106	ECL Plex Fluorescent Rainbow Markers	500 µl	RPN851E
Amersham ECL Western Blotting Detection Reagents	For 6000 cm ² membrane	RPN2134	Amersham Full Range Rainbow Marker	250 µl	RPN800E
			Amersham High Range Rainbow Marker	250 µl	RPN756E
			Amersham Low Range Rainbow Marker	250 µl	RPN755E
Amersham ECL Prime reagents			Hybond blotting membranes		
Amersham ECL Prime Western Blotting Detection Reagents		RPN2236	Amersham Protran Premium 0.45 NC (20 × 20 cm)	10 sheets	10600041
Amersham ECL Prime Western Blotting Detection Reagents for 1000 cm ² membrane ¹		RPN2232	Amersham Protran Supported 0.45 NC (20 × 20 cm)	10 sheets	10600052
Amersham ECL Select, for 1000 cm ²		RPN2235	Amersham Hybond P 0.45 (14 × 16 cm)	25 sheets	10600069
Amersham ECL Prime Blocking Agent, 20 g		RPN418	Amersham Hybond LFP (20 × 20 cm)	10 sheets	10600060
Amersham ECL Plex reagents			Whatman™ blotting membranes		
Amersham ECL Plex Western Blotting Combination Pack (Cy3, Cy5, Amersham Protran Premium)	1	RPN998	Amersham Protran 0.45 NC (20 × 20 cm)	25 sheets	10600041
Amersham ECL Plex Western Blotting Combination Pack (Cy3, Cy5, Amersham Hybond LFP)	1	RPN999	Amersham Protran 0.45 NC (20 × 20 cm)	25 sheets	10600049
Amersham ECL Plex goat-α-mouse IgG-Cy3 1000 cm ² membrane area	150 µg	PA43009	Amersham Protran 0.1 NC (20 × 20 cm)	25 sheets	10600045
Amersham ECL Plex goat-α-mouse IgG-Cy3 4000 cm ² membrane area	600 µg	PA43010	3MM Chr blotting paper (20 × 20 cm)	100 sheets	3030-861
Amersham ECL Plex goat-α-mouse IgG-Cy5 1000 cm ² membrane area	150 µg	PA45009	Amersham CyDye Antibody Labeling Kits		
Amersham ECL Plex goat-α-mouse IgG-Cy5 4000 cm ² membrane area	600 µg	PA45010	Cy2 Ab Labeling Kit	1 kit	PA32000
Amersham ECL Plex goat-α-rabbit IgG-Cy5 1000 cm ² membrane area	150 µg	PA45011	Cy2 mAb Labeling Kit	1 kit	PA32001
Amersham ECL Plex goat-α-rabbit IgG-Cy5 4000 cm ² membrane area	600 µg	PA45012	Cy3 Ab Labeling Kit	1 kit	PA33000
			Cy3 mAb Labeling Kit	1 kit	PA33001
			Cy5 Ab Labeling Kit	1 kit	PA35000
			Cy5 mAb Labeling Kit	1 kit	PA35001

Products	Quantity	Code no.	Products	Quantity	Code no.
Amersham ECL HRP-Linked Secondary Antibodies			2D electrophoresis and 2-D DIGE Sample preparation		
Amersham ECL Mouse IgG HRP-Linked Whole Ab (from sheep)	100 µl	NA931-100UL	2-D Quant Kit	500 assays	80-6483-56
Amersham ECL Mouse IgG HRP-Linked Whole Ab (from sheep)	1 ml	NA931-1ML	Nuclease Mix	0.5 ml	80-6501-42
Amersham ECL Rabbit IgG HRP-Linked Whole Ab (from donkey)	100 µl	NA934-100UL	Protease Inhibitor Mix	1 ml	80-6501-23
Amersham ECL Rabbit IgG HRP-Linked Whole Ab (from donkey)	1 ml	NA934-1ML	2-D Clean-Up Kit	50 samples	80-6484-51
Amersham ECL Rat IgG HRP-Linked Whole Antibody (from goat)	1 ml	NA935	2-D Protein Extraction Buffer Trial Kit	6 × for 10 ml	28-9435-22
Amersham ECL Mouse IgG HRP-Linked t F(ab') ₂ Fragmen (from sheep)	1 ml	NA9310-1ML	Sample Grinding Kit	50 samples	80-6483-37
Amersham ECL Rabbit IgG HRP-Linked t F(ab') ₂ Fragmen (from donkey)	1 ml	NA9340-1ML	Labeling		
Amersham ECL Rat IgG HRP-Linked t F(ab') ₂ Fragment (from goat)	1 ml	NA9350	CyDye DIGE Fluor Labeling Kit for Scarce Samples and Preparative Gel Labeling	1	25-8009-84
			CyDye DIGE Fluor Labeling Kit for Scarce Samples	1	25-8009-83
			CyDye DIGE Fluor Preparative Gel Labeling for Scarce Samples, Cy3 saturation dye	400 nmol	28-9366-83
			CyDye DIGE Fluor, Cy5 minimal dye	25 nmol	RPK0275
			CyDye DIGE Fluor, Cy3 minimal dye	25 nmol	RPK0273
			CyDye DIGE Fluor, Cy2 minimal dye	25 nmol	RPK0272
			CyDye DIGE Fluor, Cy5 minimal dye	10 nmol	25-8008-62
			CyDye DIGE Fluor, Cy3 minimal dye	10 nmol	25-8008-61
			CyDye DIGE Fluor, Cy2 minimal dye	10 nmol	25-8008-60
			CyDye DIGE Fluor, Cy5 minimal dye	5 nmol	25-8010-85
			CyDye DIGE Fluor, Cy3 minimal dye	5 nmol	25-8010-83
			CyDye DIGE Fluor, Cy2 minimal dye	5 nmol	25-8010-82
			CyDye DIGE Fluor, minimal labeling kit	5 nmol	25-8010-65
			CyDye DIGE Fluor minimal dye labeling kit	2 nmol	28-9345-30

Products	Quantity	Code no.
1st dimension		
DeStreak Reagent	1 ml	17-6003-18
DeStreak Rehydration Solution	5 × 3 ml	17-6003-19
IPGbox Kit	1	28-9334-92
Ettan IPGphor Manifold Light Complete	1	11-0026-88
Ettan IPGphor Manifold, Complete	1	80-6498-38
Ettan IPGphor 3 Isoelectric Focusing Unit	1	11-0033-64
Equilibration Tube Set	12	80-6467-79
2nd dimension		
Low-fluorescence Glass Plates, 27 × 21 cm, for Ettan DALT (including spacers)	1	80-6475-58
DIGE Gel	3	28-9374-51
DIGE Buffer Kit	2 × 125 ml anode buffer, 4 × 125 ml cathode buffer, 12 tubes agarose sealing solution	28-9374-52
DALTsix Gel Caster	1	80-6485-46
MultiTemp™ IV Thermostatic Circulator 115 V	1	28-9941-72
MultiTemp IV Thermostatic Circulator 230 V	1	28-9941-71
EPS 601 Power Supply	1	18-1130-02
Ettan DALTsix Electrophoresis Unit, 220 V	1	80-6485-27
Ettan DALTsix Electrophoresis Unit, 115 V	1	80-6485-08
Post gel staining and processing		
Ettan Spot Picker	1	18-1145-28
Ettan Digester	1	18-1142-68

Products	Quantity	Code no.
Amersham ECL Gel		
Amersham ECL Gel Box		28-9906-08
Amersham ECL Gel Running buffer	250 ml	28-9902-52
	Code no.	Code no.
Amersham ECL Gels		
	10 wells (10 gel pack)	15 wells (10 gel pack)
Amersham ECL Gel 10%	28-9898-04	28-9901-55
Amersham ECL Gel 12%	28-9898-05	28-9901-56
Amersham ECL Gel 4-12%	28-9898-06	28-9901-57
Amersham ECL Gel 8-16%	28-9898-07	28-9901-58
Amersham ECL Gel 4-20%	28-9901-54	28-9901-59
Products	Quantity	Code no.
Hyperfilm		
Amersham Hyperfilm ECL 5 × 7 in	50 sheets	28-9068-35
Amersham Hyperfilm ECL 18 × 24 cm	50 sheets	28-9068-36
Amersham Hyperfilm ECL 18 × 24 cm	100 sheets	28-9068-37
Amersham Hyperfilm ECL 8 × 10 in	50 sheets	28-9068-38
Amersham Hyperfilm ECL 8 × 10 in	100 sheets	28-9068-39
Amersham Hyperfilm MP 8 × 10 in	50 sheets	28-9068-42
Amersham Hyperfilm MP 18 × 24 cm	50 sheets	28-9068-42
Amersham Hyperfilm MP 18 × 24 cm	100 sheets	28-9068-43
Amersham Hyperfilm MP 5 × 7 in	50 sheets	28-9068-45
Amersham Hyperfilm MP 5 × 7 in	100 sheets	28-9068-46
Amersham Hyperfilm MP Enveloped 18 × 24 cm, Individual film envelopes	50 sheets	28-9068-50



www.gelifesciences.com/amershamwesternblotting

GE, imagination at work, and GE monogram are trademarks of General Electric Company. Amersham, Cy, CyDye, DeCyder, Deep Purple, ECL, ECL Advance, ECL DualVue, ECL Prime, ECL Plex, ECL Select, Ettan, Hybond, Hyperfilm, ImageMaster, ImageScanner, ImageQuant, IPGphor, MultiTemp, Optitran, Protran, Rainbow, Typhoon, and Whatman are trademarks of GE Healthcare companies. Coomassie is a registered trademark of ICI plc. SYPRO is a trademark of Invitrogen Corp. FAM, Qdot and SYBR are trademarks of Life Technologies Corporation. SIGMA is a trademark of Sigma Corporation of America. ©2008–2014 General Electric Company—All rights reserved. First published August 2008. GE Healthcare UK Limited, Amersham Place, Little Chalfont, Buckinghamshire, HP7 9NA, UK 28-9419-67 AF 03/2014